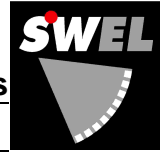


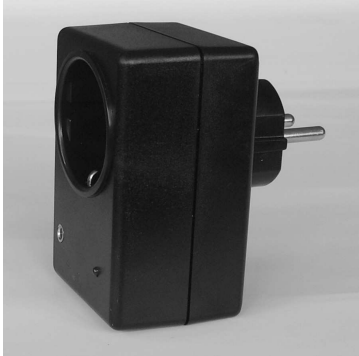
# "Mini" Power Adapter D

## for use with a "Mini" Sensor Type "Classic"

Details



GREN



for Germany / Austria / France

### Operating Principle

The "Mini" Power Adapter D is used in combination with a "Mini" Occupancy Sensor Type "Classic" (with Timer!), to turn a device on and off automatically.

From this point on the connected device will operate based on occupancy, detected by the sensor.

- without Timer
- for use with a "Classic" sensor, thus with its own Timer
- sensor-controlled operation of lights, heaters, air cons, pumps...

### Indicator LED

The LED indicates the state of the Power Adapter. It is also useful for troubleshooting.

off ..... Device (Load) is switched off or there is a mains failure

on ..... Sensor is active, device is switched on

### Problems?

The device does not turn on automatically:

- Check that the mains supply is turned on.
- Check that the Power Adapter is properly connected to the sensor, device and wall socket.
- Check that the device main switch is set to 'ON'
- Check that the device is not faulty.

The device does not turn off automatically, even if there is nobody in the sensor's view:

- Keep the sensor's timer setting in mind.
- Check that nothing is interfering with the sensor (please refer to the sensor's instructions).
- For individual work areas we recommend the use of the "Mini" Occupancy Sensor CUBI.

### Specifications

- Operating voltage 230V AC, German standard (3-pole)
- Load max. 3600W (16A)
- Power consumption less than 1W
- Sensor supply 5V DC +/-0,1V, max. 30mA
- Case black, 56mm x 46mm x 86mm (2.2" x 1.9" x 3.4")
- Weight 150g (5oz.)
- For indoor use in a dry environment
- **CAUTION! Do not connect to computers, fax machines, answering machines or anything similar! Turning off automatically may cause data loss!**

SWEL is constantly improving its products and reserves the right to make changes in the product design without notification.

